

# Sledge Hammer™

Available for PATA and SATA Drives

Secure Erase Data on up to **32** Hard Drives at Once!

## Hammer

Hammer has been the de-facto leader in hardware based, secure data eradication since it was developed in 2007. The ultimate PATA and SATA eradication tool has just become even more valuable.

## Extended Capability

Introducing Sledge Hammer. Initially available for PATA and SATA drives, each Sledge Hammer allows up to 8 drives to be subjected to the same rock-solid, NIST 800-88 compliant data eradication at one time. Up to 4 Sledge Hammers can be used with Hammer at one time.

## Mix and Match

Connect All PATA, Mixed PATA/SATA, etc... to Hammer.

**That's 32 drives at once.** Sledge Hammer incorporates all the functionality of ATA Hammer with some new and exciting features, like **the ability to HOT SWAP** hard drives. When one drive is finished you can remove the drive and put another in its place and start purging the new drive right away!

## NIST Sanitization Recommendations

The National Institute of Standards and Technology has established new standards for electronic media sanitization which ranks Security Erase at the high-

SPECIFICATIONS	
Drive Interfaces	Parallel ATA (8)
Host Interface	ATA
Max Transfer Rate	8.0 GB/minute
Input Voltage	+12V DC
Max Input current	3.5A
Voltage to Drives	12V DC, 5+V DC
Device Addressing Support	28 & 48 bit
Max Transfer Mode	UDMA mode 6
Supported Devices	ATA 4 through ATA 8
Device Dimensions	22"L x 3"H x 4"W
Approximate Weight	7 Lbs

est security level without rendering the media unusable. With Hammer™, you can safely destroy data and re-deploy costly hardware. For more information on NIST Special Publication 800-00, visit <http://www.nist.gov>.



## Security Erase

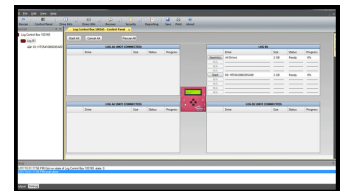
Security Erase is a standard technology embedded in most ATA hard drives manufactured after 2001. This technique is considered equal to degaussing by NIST and because the drives can be reused has the added benefit of being not only cost-effective, but green!

## The CPR Tools Advantage

When Security Erase is implemented by Hammer™, the hard drive is assigned a random password that locks the drive completely. It will not unlock until the Security Erase procedure is completed. When Security Erase is not supported, Hammer™ automatically uses an embedded version of CPR Tools' BangDisk™ utility.

## Features

- Works with the CPR Toolbox
- Purge 8 drives per Sledge Hammer at one time
- Meets NIST 800-88, HIPAA, SoX, GLBA & more
- Complete audit trails
- Portable for field use
- Lock & unlock drives
- Stores 16,000 records



## The Choice is Clear

CPR Tools' Hammer™ implements the ATA Security Erase command to completely purge all data from ATA hard drives. This easy-to-use, one-step device can now connect to up to four Sledge Hammers to eradicate data from up to 32 drives at up to 8.0GB/minute. For onsite data purging, the compact, portable Hammer™ operates as a stand alone device.



905 Industrial Blvd • LaBelle, FL 33935  
Tel: 863-674-0120 • Fax: 863-674-0066

\*image not to scale